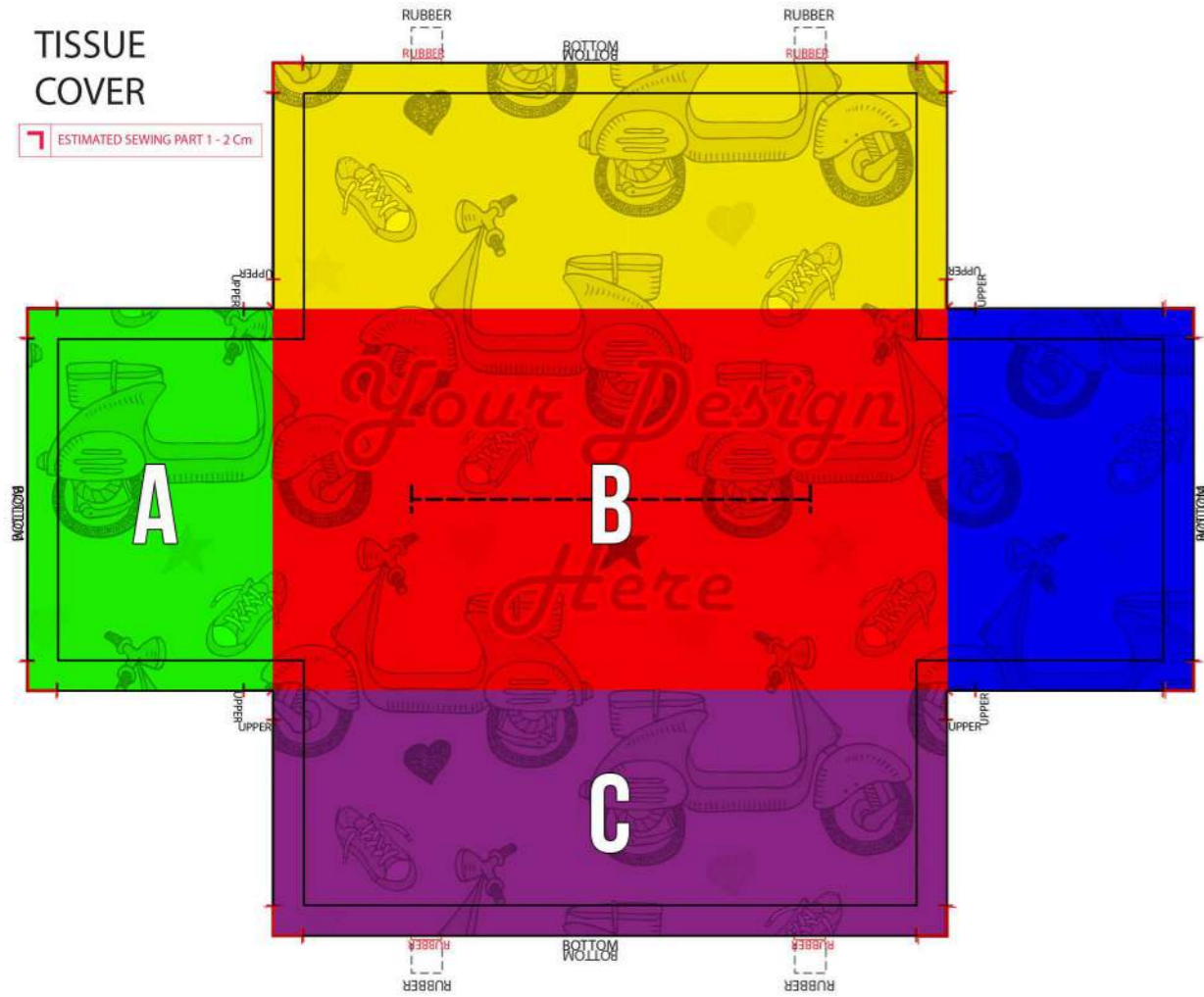


TISSUE COVER PATTERN AND GUIDANCE

HOW TO
PUT YOUR DESIGN INTO A FULLPRINT PATTERN

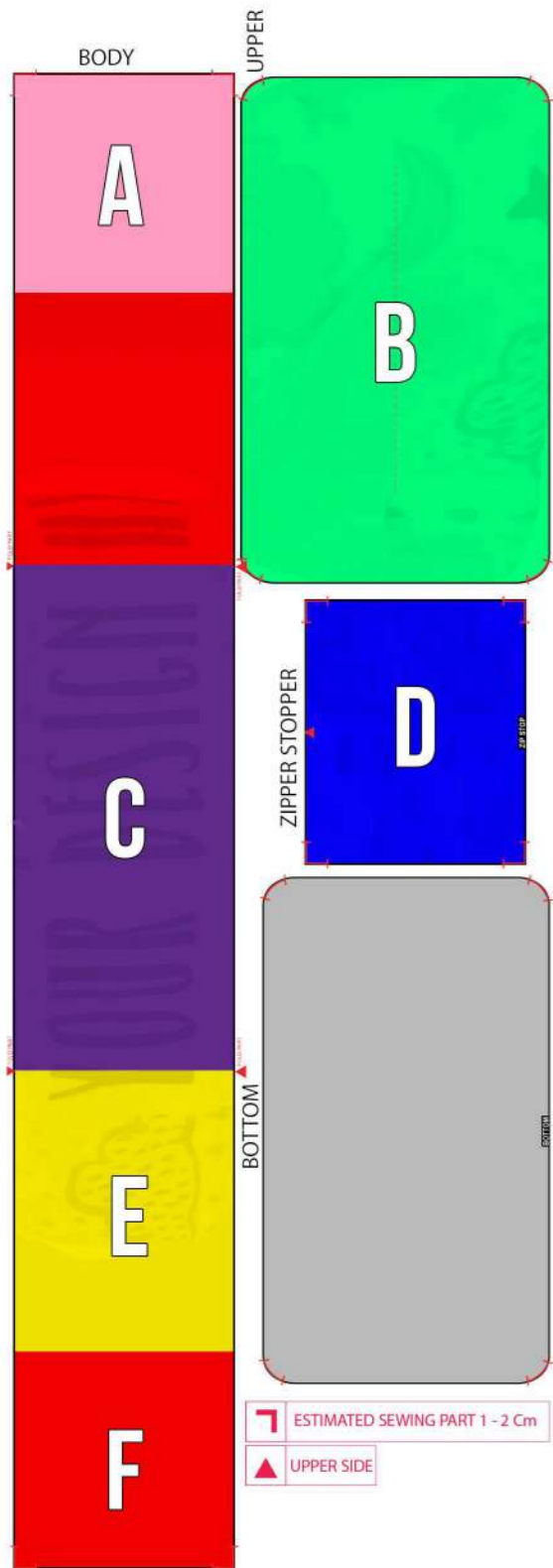
TISSUE
COVER

ESTIMATED SEWING PART 1 - 2 Cm



TISSUE COVER WITH ZIPPER PATTERN AND GUIDANCE

HOW TO
PUT YOUR DESIGN INTO A FULLPRINT PATTERN



ILLUSTRATED

HOW TO PUT YOUR DESIGN INTO A FULLPRINT PATTERN

Open the pattern file which you downloaded from the product page (please only use the pattern according to the size that you want to order) on Adobe Photoshop. Illustration is using Adobe Photoshop

HOW TO CREATE WOMAN SMALL SLING BAG WITH YOUR OWN DESIGN



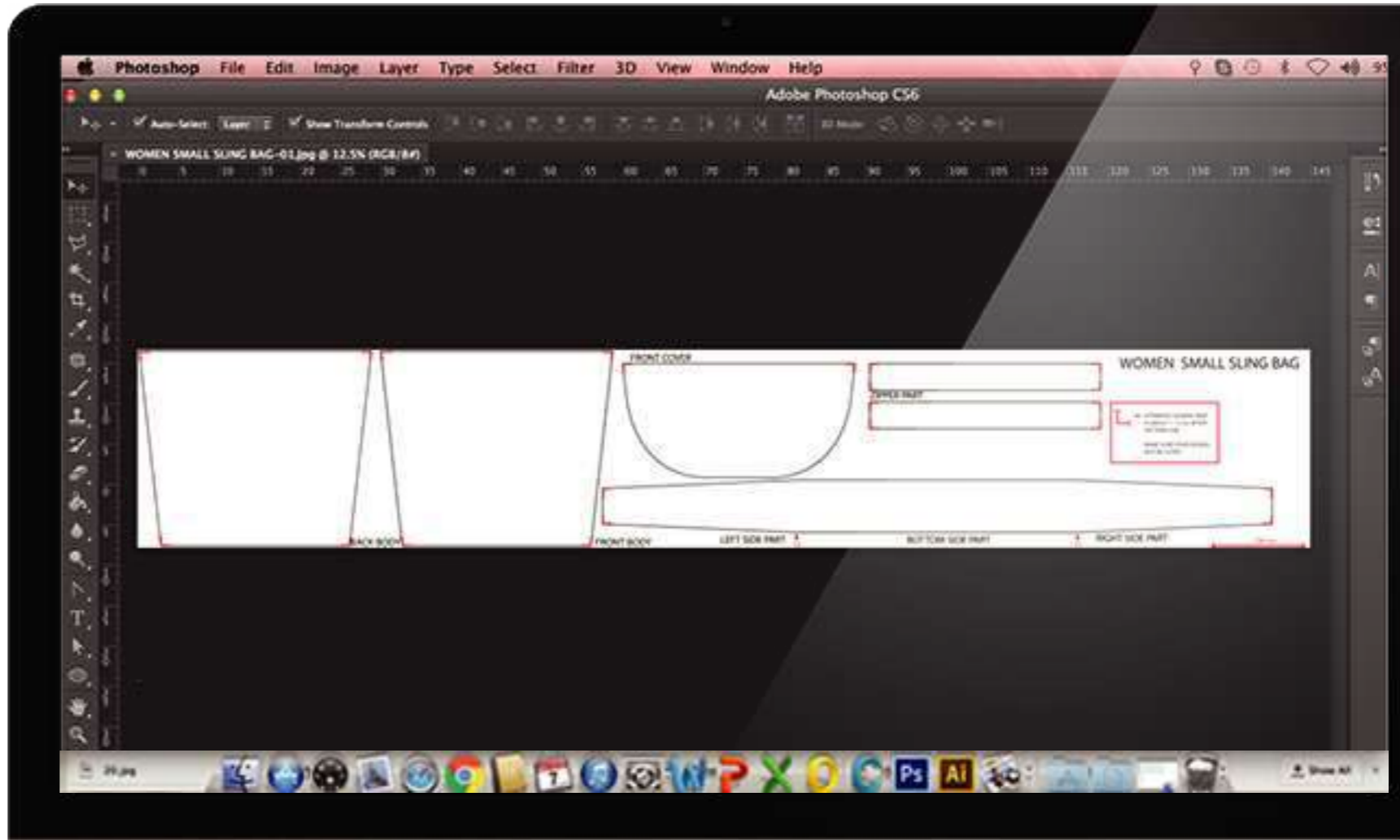
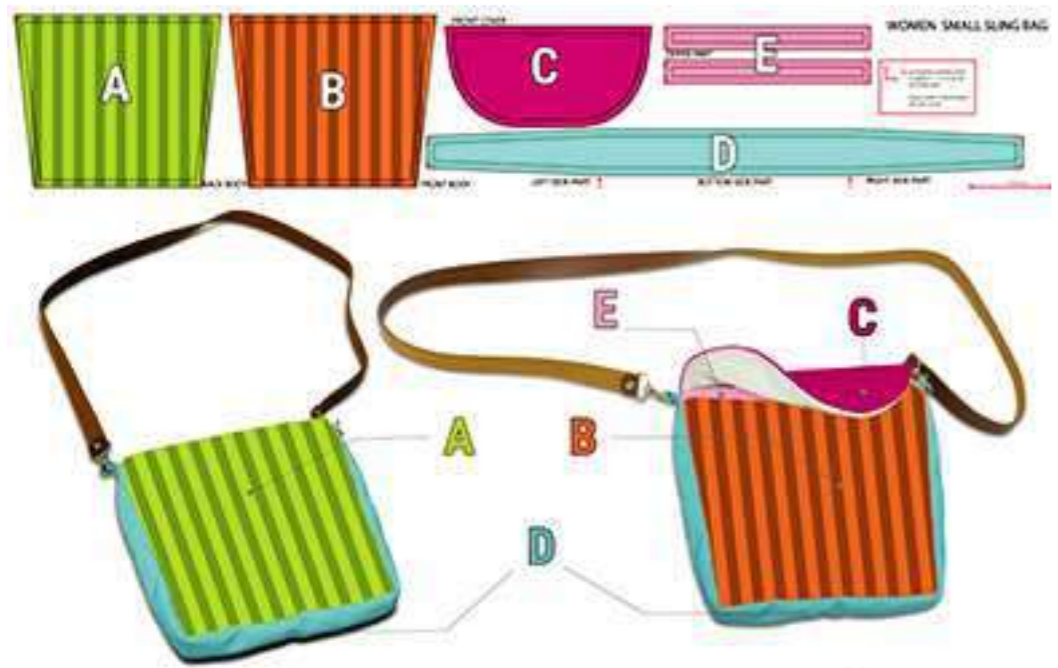
Need your attention:

1. Please pay attention to pattern part position.
2. Black line is fabric/pattern cutting line.
3. Red mark on every corner is a sewing/ folding line




ESTIMATED SEWING PART IS ABOUT 1 - 2 Cm AFTER PATTERN LINE

MAKE SURE YOUR DESIGN NOT BE CUTED




Guidelines

HOW TO PUT YOUR DESIGN INTO A FULLPRINT PATTERN

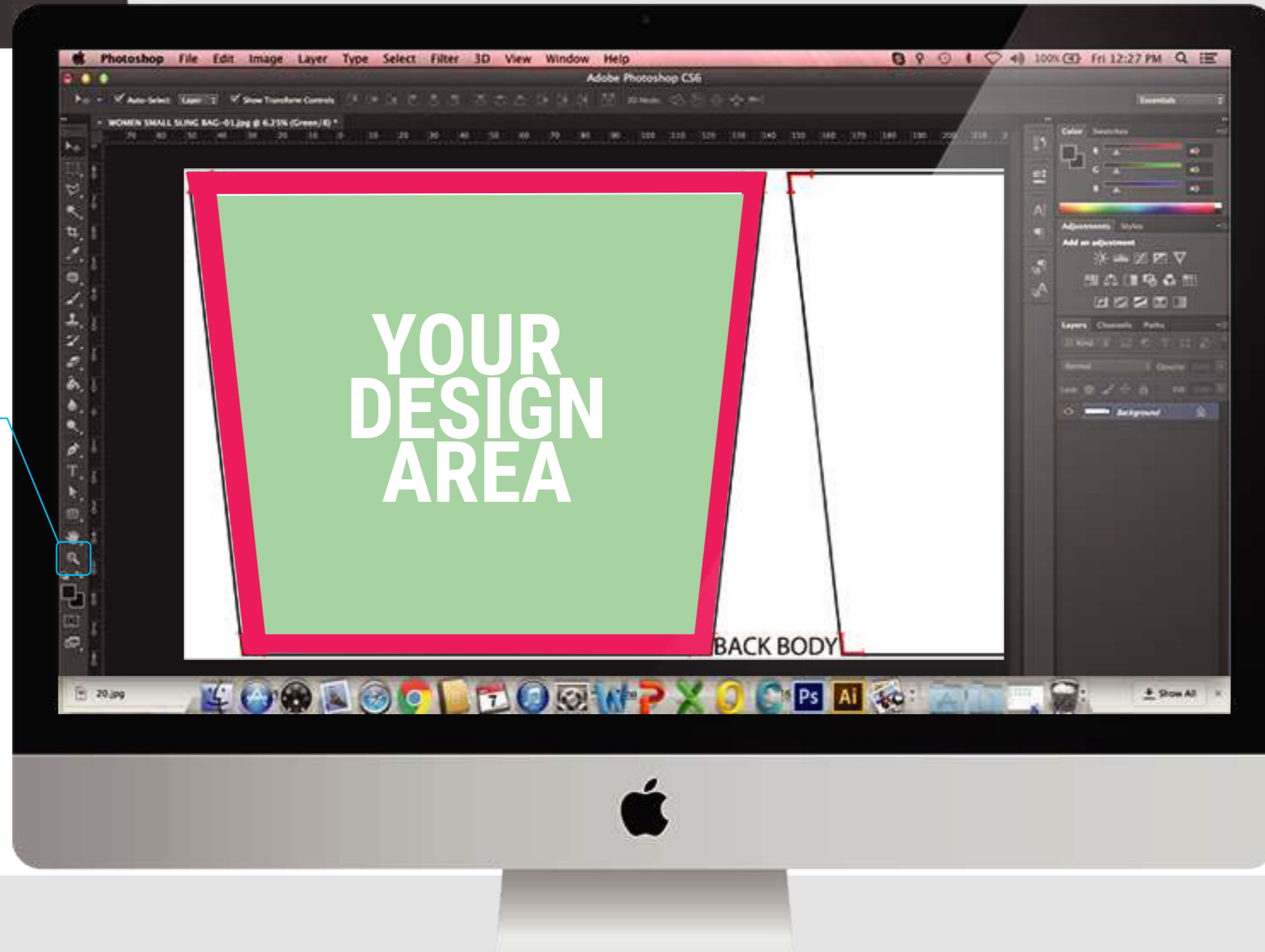
 - ESTIMATED SEWING PART IS ABOUT 1 - 2 Cm AFTER PATTERN LINE

MAKE SURE YOUR DESIGN NOT BE CUTED

To avoid your design is being cutted/ distructed, follow these steps.

1. Enlarge the area using **Zoom tool** [] at left side so you can see the red at the corner.

2. Connect the red mark and you may see the **Red Area** as an estimated **sewing area** and **Green Area** is the estimated **your design area**.

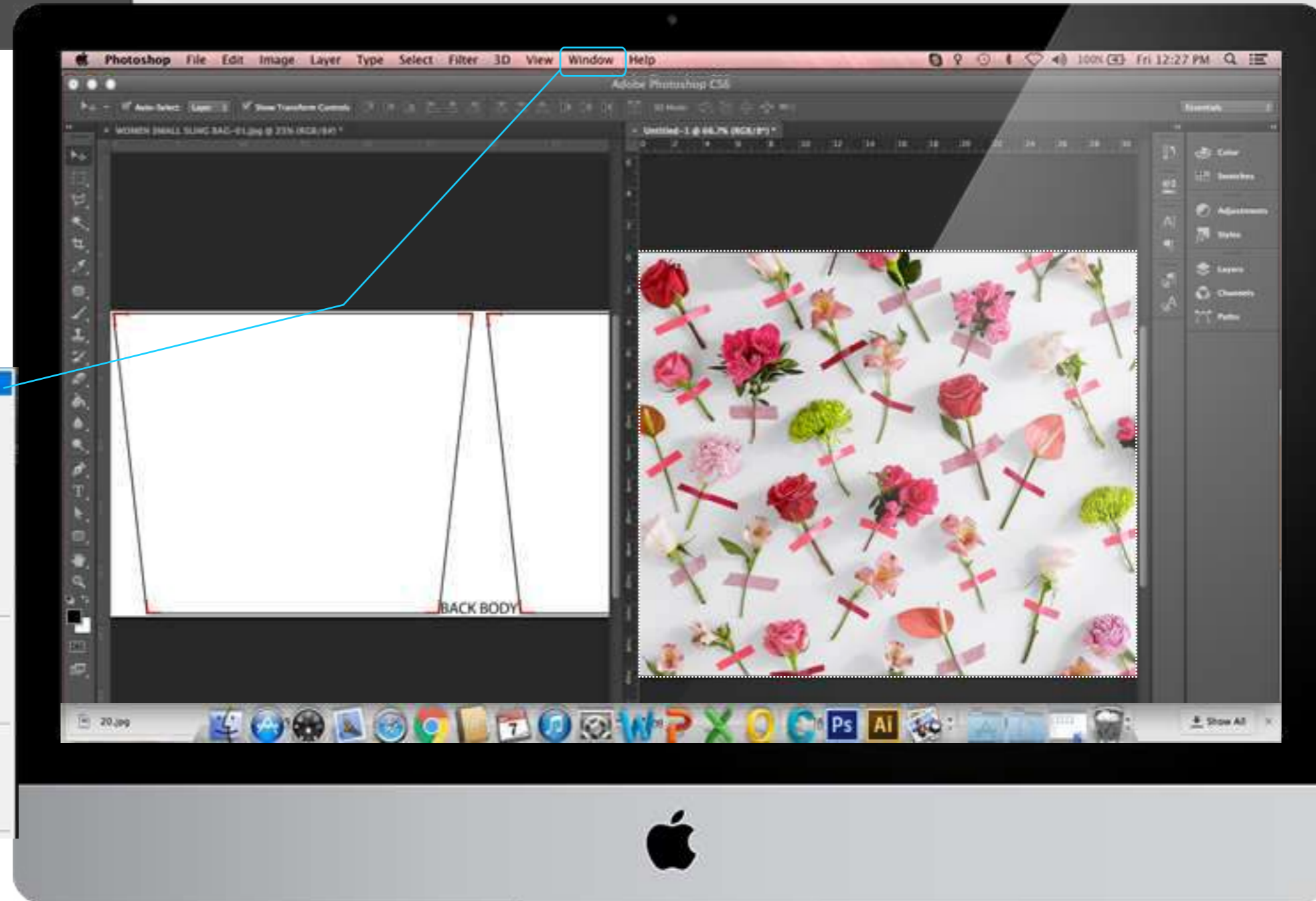
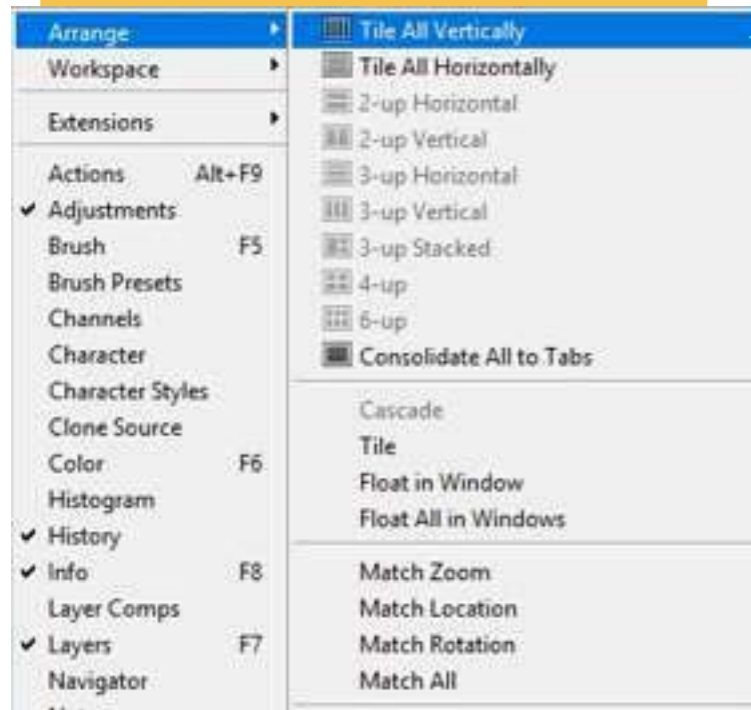


FILLING PATTERN

HOW TO PUT YOUR DESIGN INTO A FULLPRINT PATTERN

Open the pattern file and your design file on Adobe Photoshop.

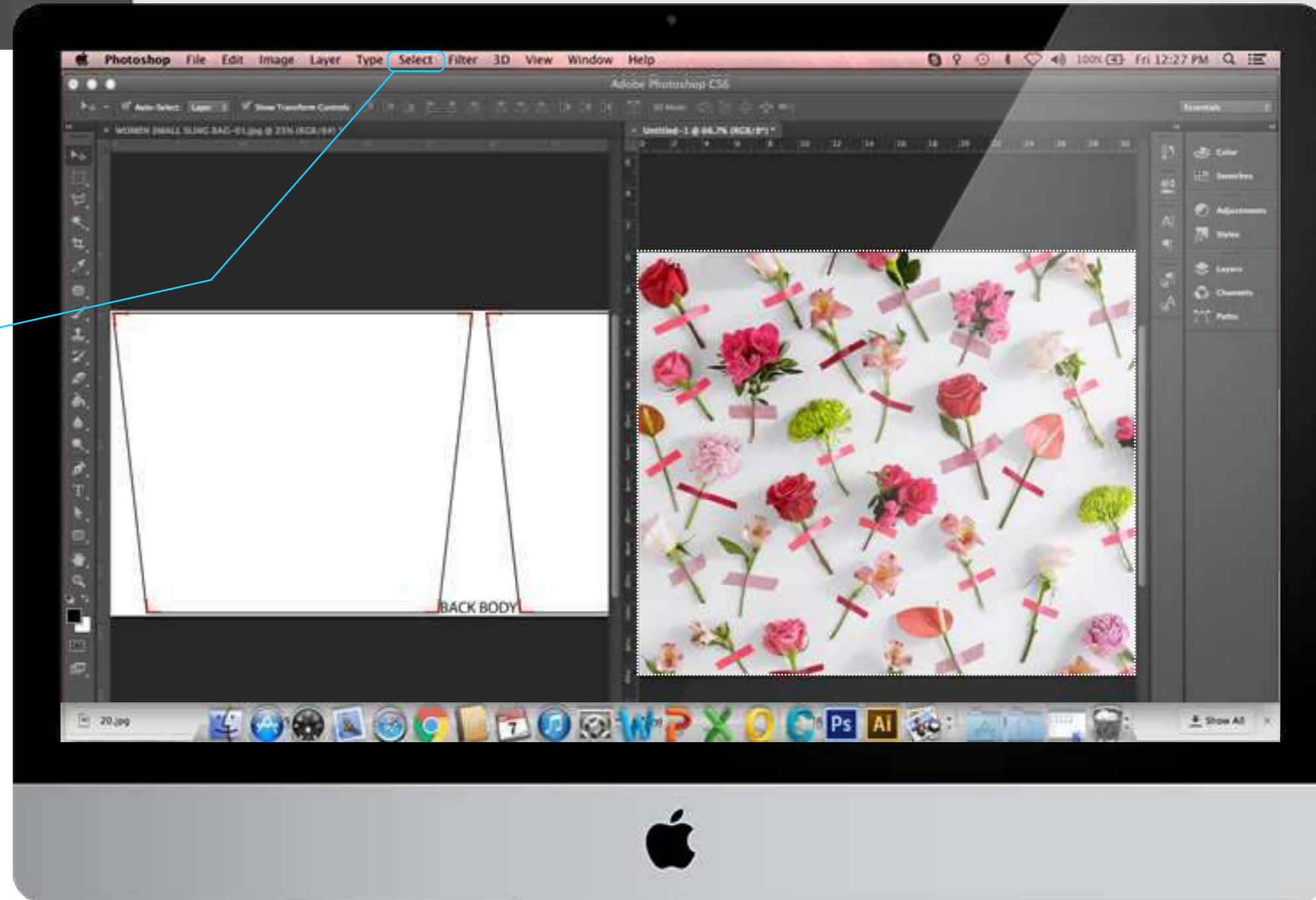
1. Go to **Window** menu on the menu bar, select **Arrange** then **Title All Vertically** (**Window > Arrange > Title All Vertically**)



FILLING PATTERN

HOW TO
PUT YOUR DESIGN INTO A FULLPRINT PATTERN

2. From your Design file, go to **Select** menu on menu bar then choose All (**Select > All**)

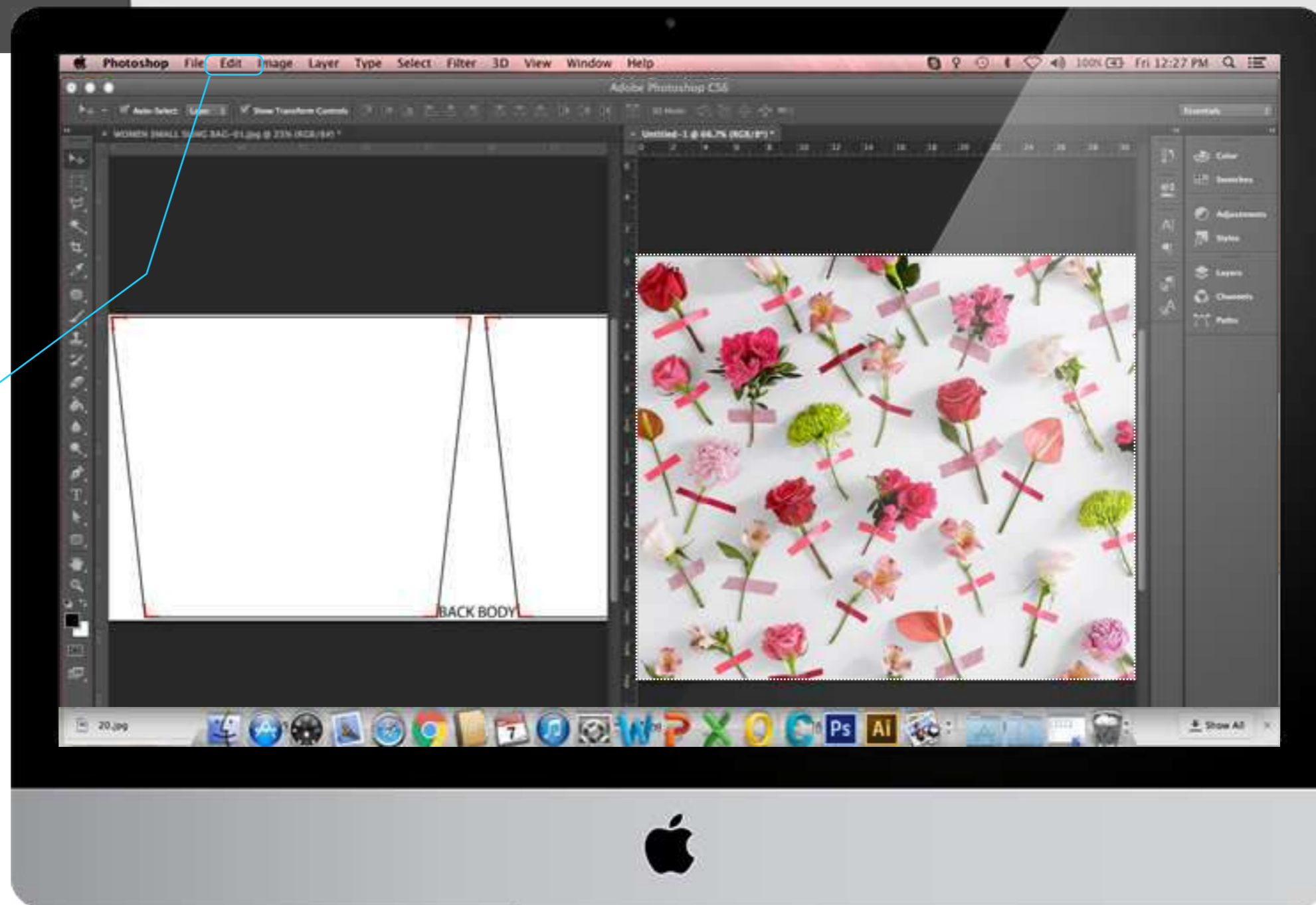


FILLING PATTERN

HOW TO
PUT YOUR DESIGN INTO A FULLPRINT PATTERN

3. Goto **Edit** than **Copy** (**Edit > Copy**)

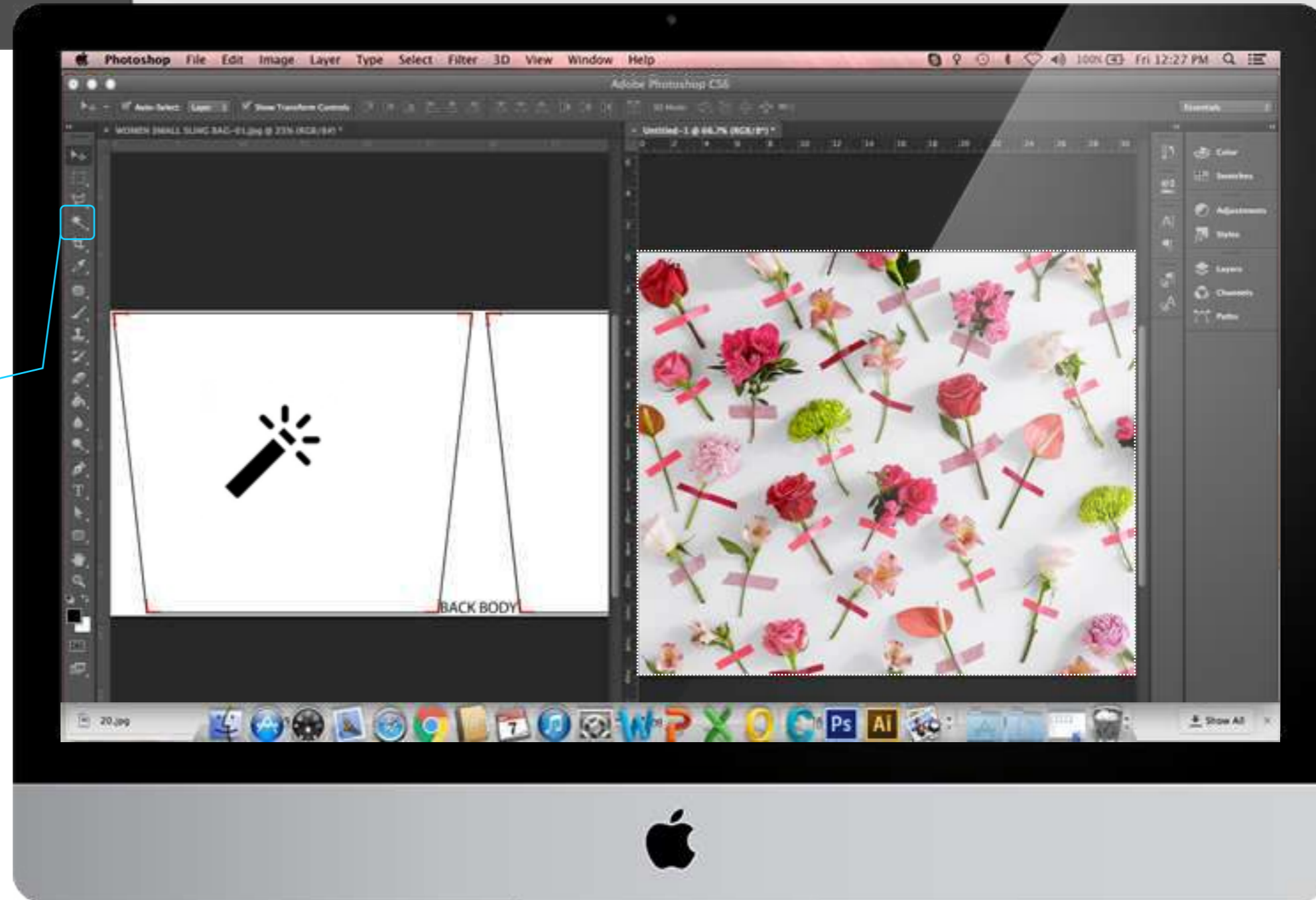
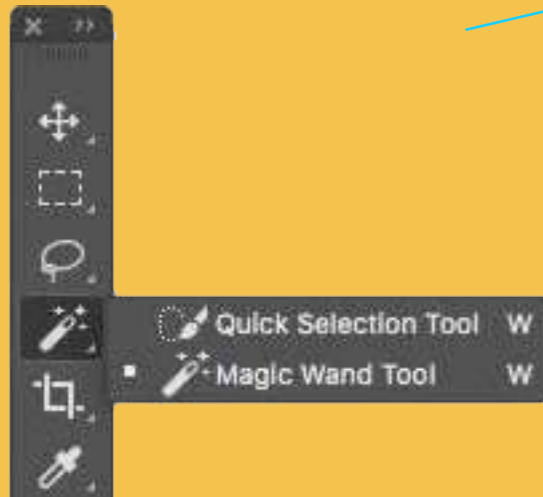
Undo Copy Pixels	Ctrl+Z
Step Forward	Shift+Ctrl+Z
Step Backward	Alt+Ctrl+Z
Fade...	Shift+Ctrl+F
Cut	Ctrl+X
Copy	Ctrl+C
Copy Merged	Shift+Ctrl+C
Paste	Ctrl+V
Paste Special	
Clear	
Check Spelling...	
Find and Replace Text...	
Fill...	Shift+F5
Stroke...	
Content-Aware Scale	Alt+Shift+Ctrl+C
Puppet Warp	
Free Transform	Ctrl+T



FILLING PATTERN

HOW TO PUT YOUR DESIGN INTO A FULLPRINT PATTERN

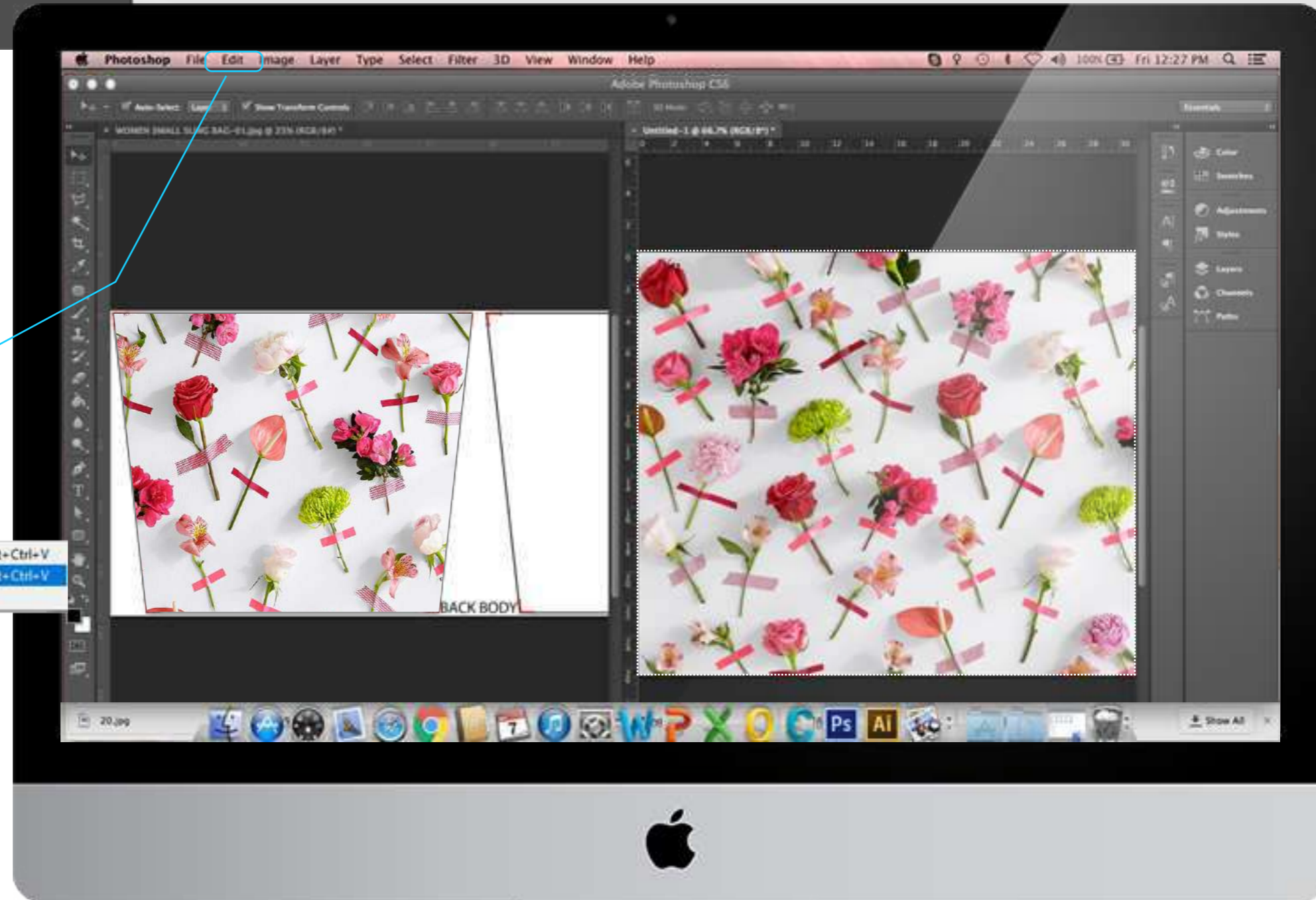
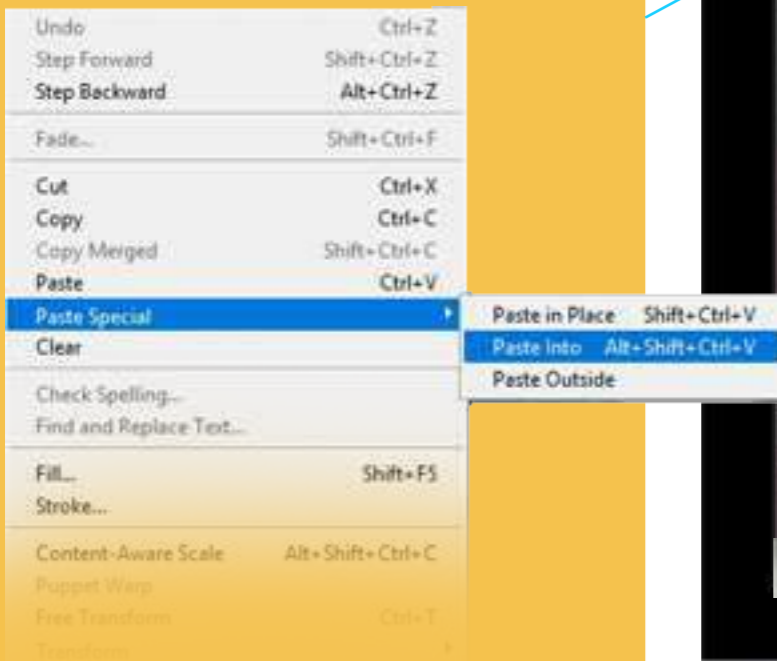
4. On the pattern file window, use the **Magic Wand Tool** (at tool bar on the left side) then left-click inside the part you want to work with



FILLING PATTERN

HOW TO PUT YOUR DESIGN INTO A FULLPRINT PATTERN

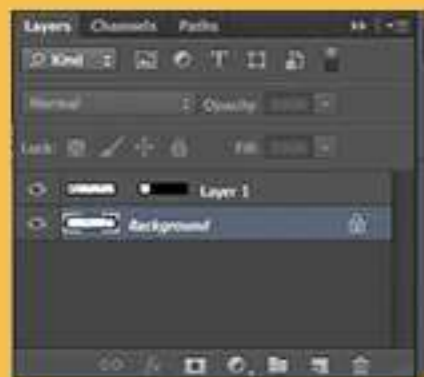
5. Go to **Edit** from menu bar then select **Paste Special** and **Paste Into** (**Edit > Paste Special > Paste Into**). You may adjust the pasted image by dragging it.



FILLING PATTERN

HOW TO
PUT YOUR DESIGN INTO A FULLPRINT PATTERN

6. Before continue another part you should click **background layer** at layer list.



If layer list did not show you can easily press **F7** button on your keyboard or go to menu bar **Window > Layer**

7. You can repeat selecting part by using **Magic Wand** and after you can **Paste Special** the design until all part filled.

